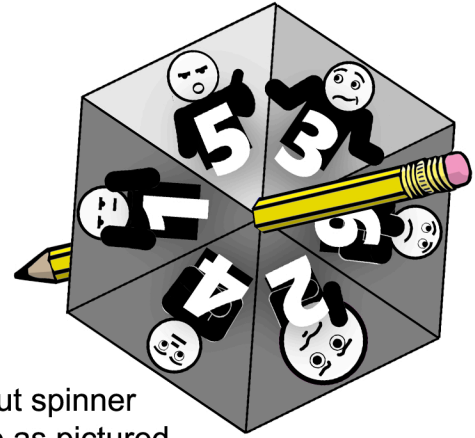
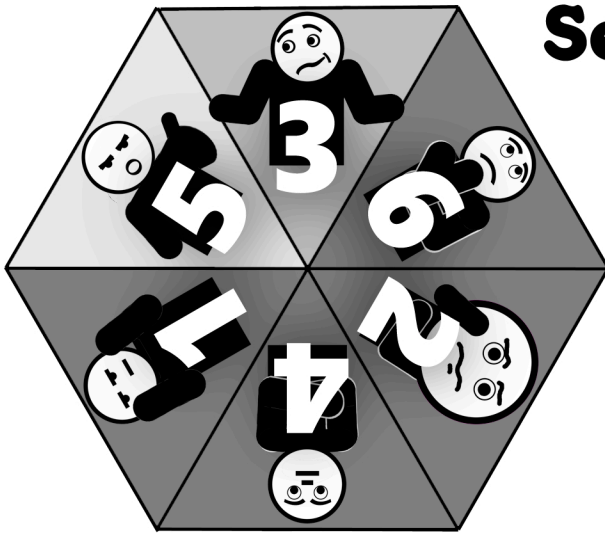
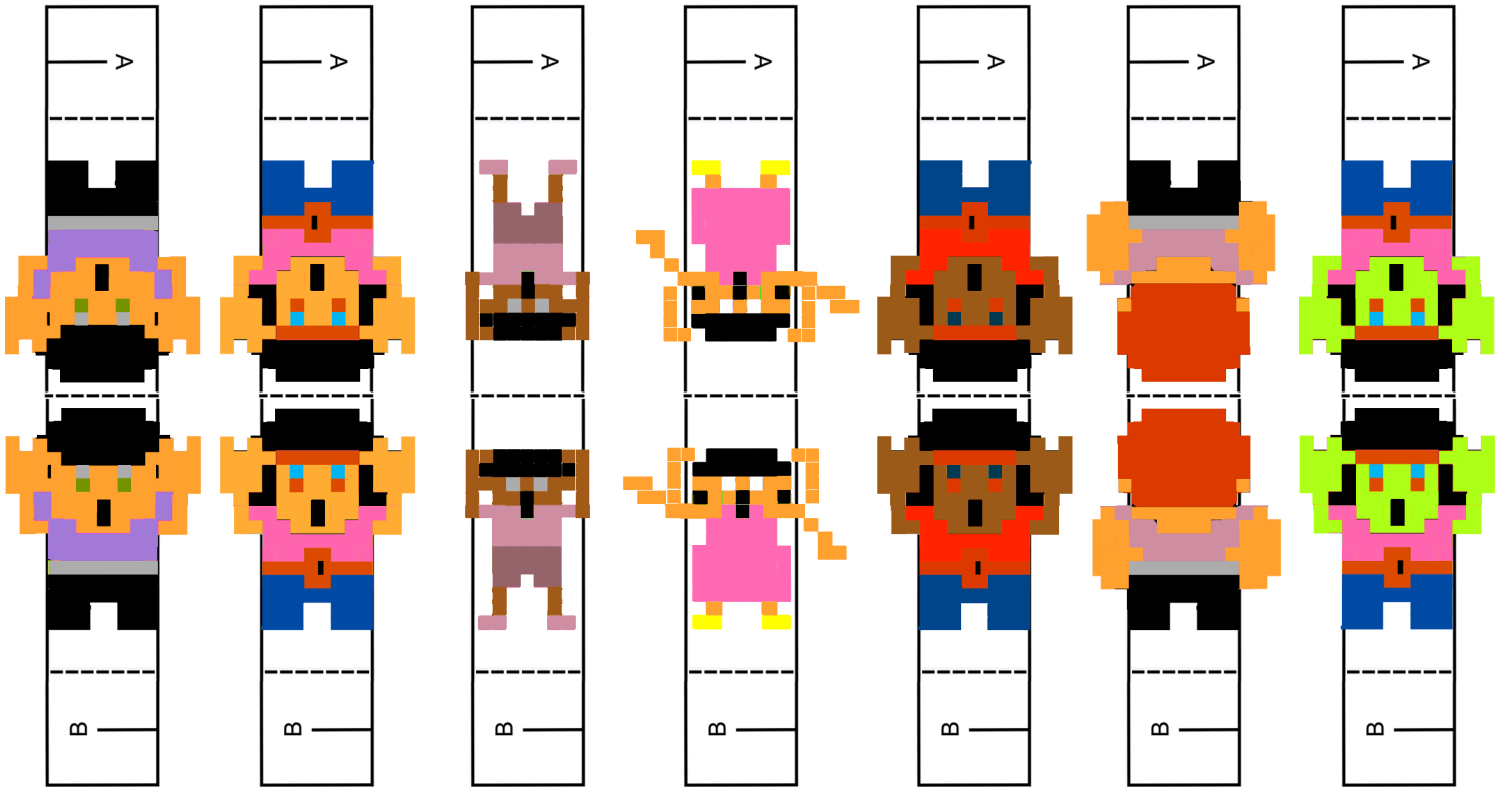


# Second Hand Drugs

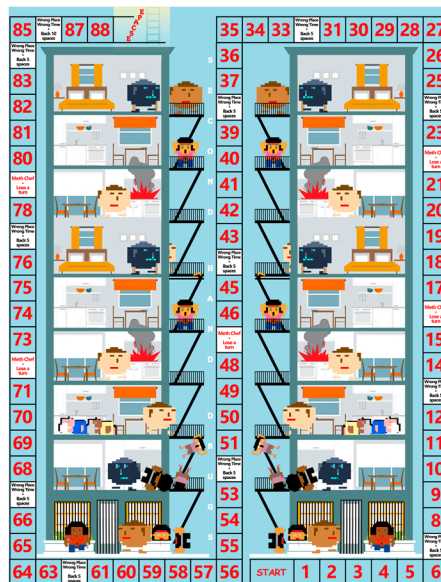


Copy or cut out spinner and assemble as pictured.



Print, cut out, and assemble the board, spinner, and player's tokens as shown. [You can use a die, or dice in place of the spinner to move your token around the board.]

There is no strategy: just be in the right place at the right time to avoid the consequences of second hand drugs. A printable Second Hand Drugs poster is included to satirize the government's all-out attack on second hand tobacco smoke.



Cut slots A and B, fold on the dotted lines, and insert slot A into slot B to form base and assemble as pictured.

85

Wrong Place  
Wrong Time  
•  
Back 10  
spaces

87

88

ESCAPE

Wrong Place  
Wrong Time  
•  
Back 5  
spaces

83

82

81

80

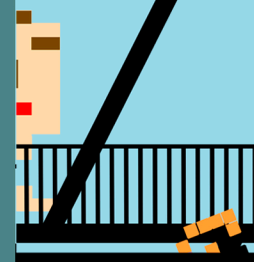
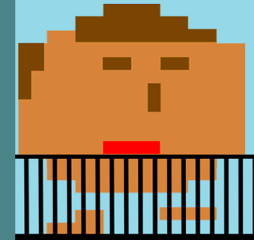
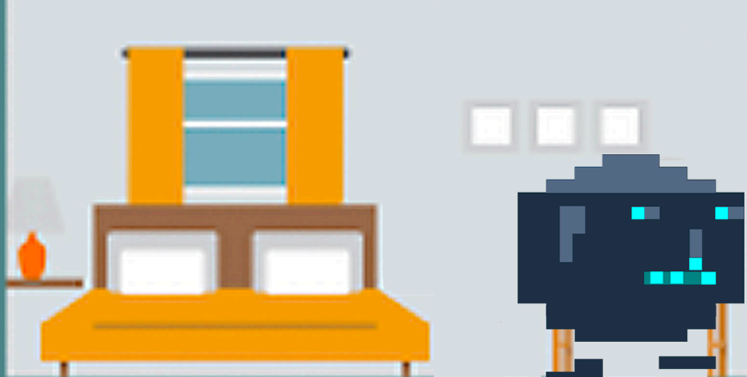
Meth Chef  
•  
Lose a  
turn

78

Wrong Place  
Wrong Time  
•  
Back 5  
spaces

76

75



S

E

C

O

N

D

H

3

3

3

Wrong  
Wrong  
•  
Back  
spa

3

4

4

4

4

Wrong  
Wrong  
•  
Back  
spa

4

5	34	33	Wrong Place Wrong Time • Back 5 spaces	31	30	29	28	27
6								26
7								25
Wrong Place Wrong Time • Back 5 spaces								Wrong Place Wrong Time • Back 5 spaces
9								23
0								Meth Chef • Lose a turn
1	21							
2	20							
3	19							
Wrong Place Wrong Time • Back 5 spaces	18							
5	17							

74

73

Meth Chef  
Lose a turn

71

70

69

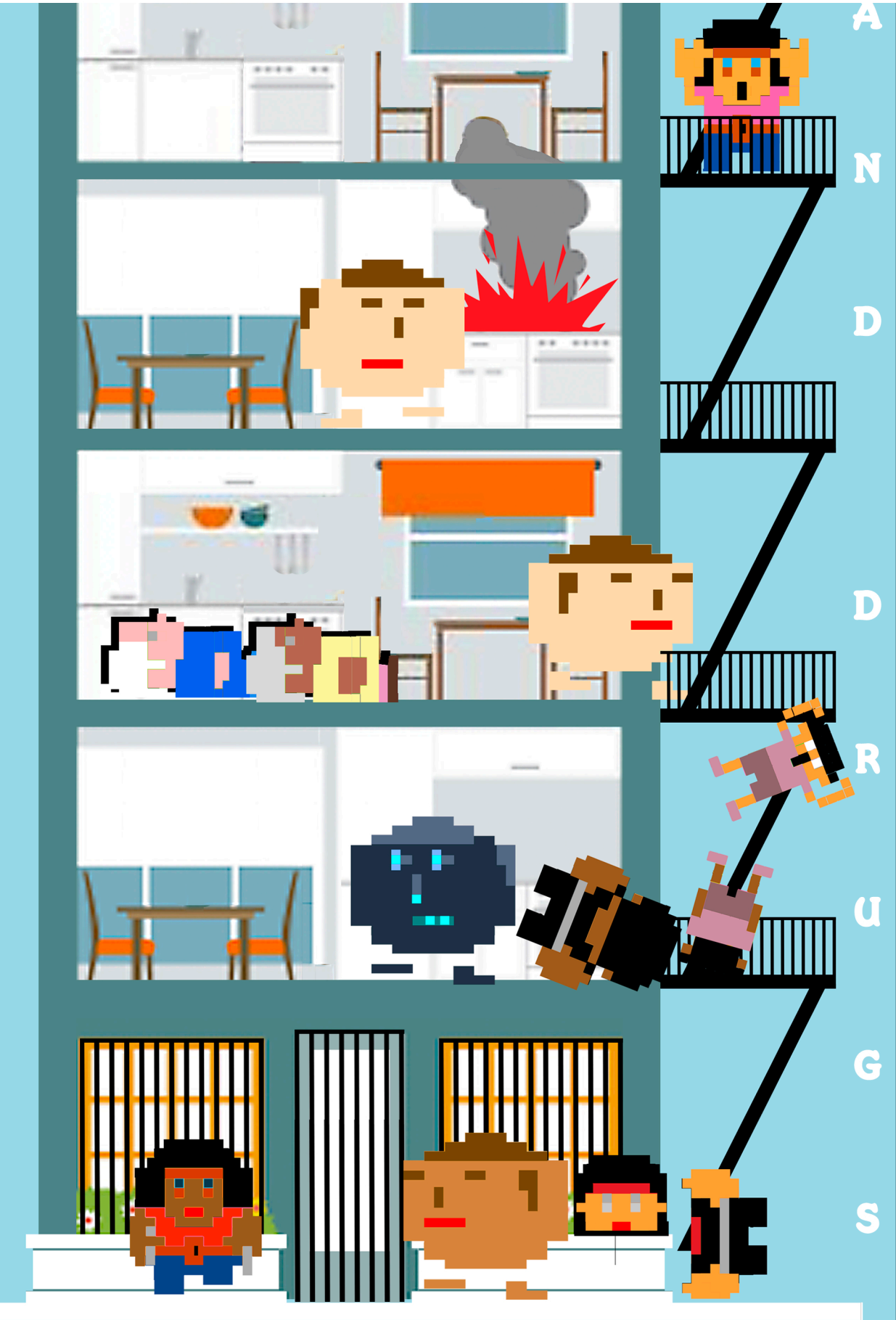
68

Wrong Place  
Wrong Time  
Back 5 spaces

66

65

64



A

N

D

D

R

U

G

S

4

Meth  
Lose  
tu

4

4

5

5

Wrong  
Wrong  
Back  
spa

5

5

5

5

63

Wrong Place  
Wrong Time  
Back 5 spaces

61

60

59

58

57



6

Chef  
Lose a  
turn

8

9

0

1

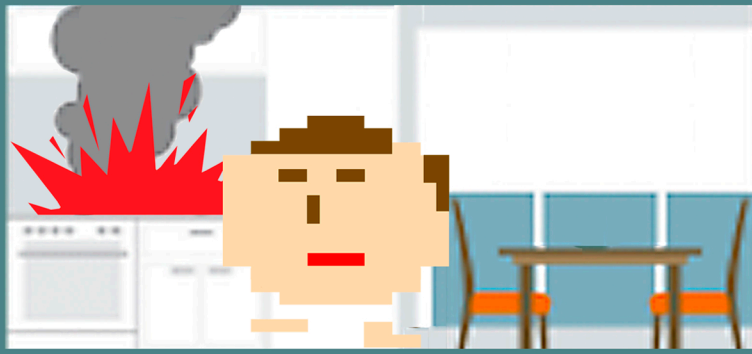
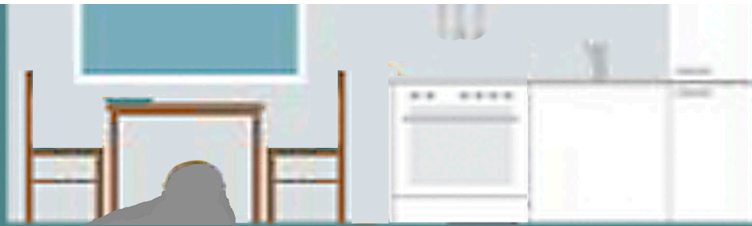
Wrong Place  
Wrong Time  
Back 5  
spaces

3

4

5

6



Meth Chef  
Lose a  
turn

15

14

Wrong Place  
Wrong Time  
Back 5  
spaces

12

11

10

9

8

Wrong Place  
Wrong Time  
Back 5  
spaces

START

1

2

3

4

5

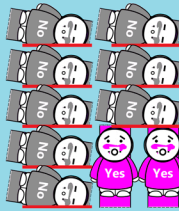
6

# BOTH DRUG USE AND SECONDHAND DRUG EXPOSURE ARE HIGH IN MULTIUNIT HOUSING



- About **80 million (1 in 4) people in the US** live in multiunit housing, such as apartments.

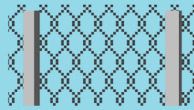
- Many who live in public housing are especially affected by secondhand drugs, **including children, the elderly, and people with disabilities.**



- About **8 in 10 of multiunit housing residents** are living in fear of secondhand drugs.

**40%**

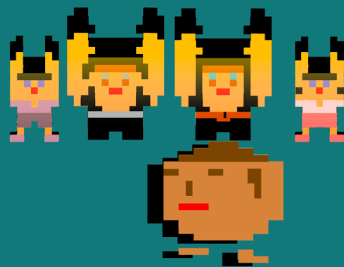
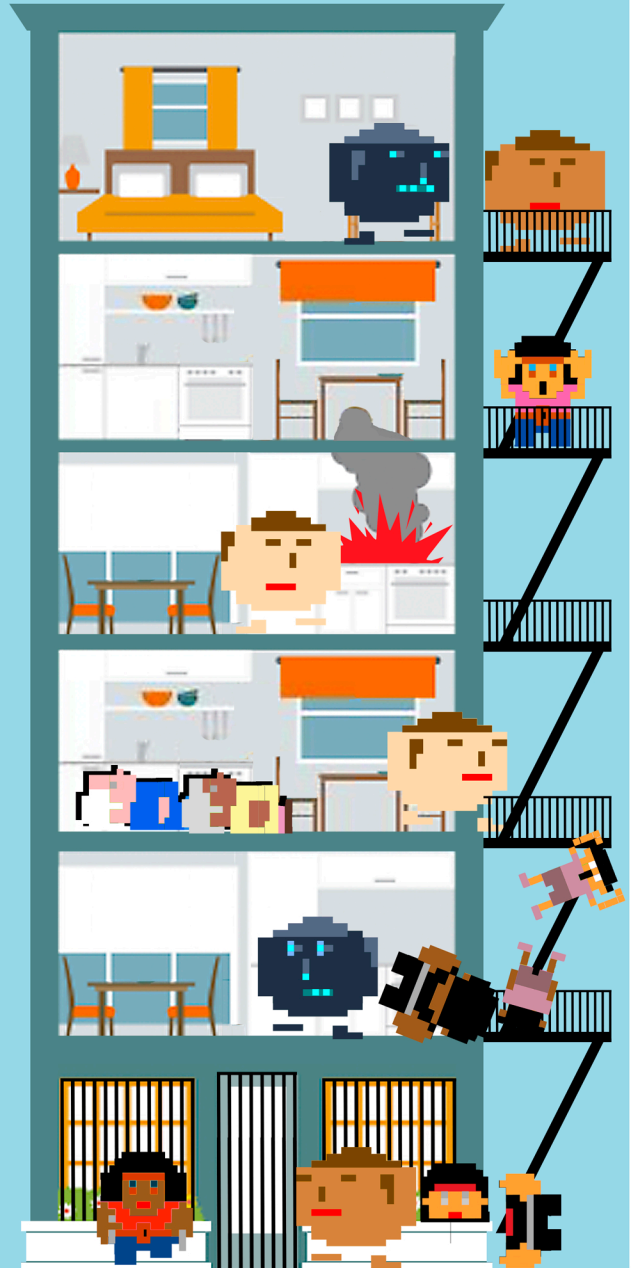
- About **40 percent of residents in multiunit housing use drugs or are drug dealers**, and are sources of secondhand drug exposure.



- **18% of prison inmates** committed their current offence to obtain money for drugs.



- **1,000 homicides year** are drug-related.



Among multiunit housing residents with drug-free apartments, **34 percent** report that secondhand drugs involuntarily enters their homes from somewhere else in or around the building.

## There is **no safe level** of secondhand drug exposure



Secondhand drugs can **travel within multiunit housing** and common areas through **halls, elevators, fire escapes, and basements.**



Barring windows and using alarms **does not remove the danger of secondhand drugs.**



Drug programs and rehabilitation **cannot prevent exposure to secondhand drugs.**